

R̄. Jerusalem plantabis

H 23					
Mode	8003	Rom1	10r		
CAO	7033	Rom2	6v		
C	G	B	E	M	V
H	R	D	F	S	

Jer 31,5

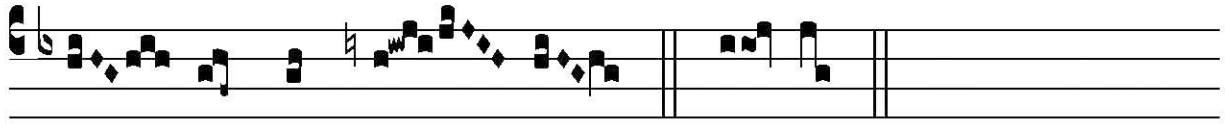
R̄. VIII

J Erú- sa- lem, plantábis víne- am in món-
 ti-bus tu- is. et exsultá- bis qui- a di- es Dó- mini
 vé- ni- et. Surge, Si- on, convérte- re ad De-
 um tu- um. Gau- de et læ- tá- re, Ja- cob : qui- a de médi-
 o gén- ti- um Salvá- tor tuus véni- et. V̄. De-

The image shows a musical score for the antiphona 'R̄. Jerusalem plantabis'. It consists of five systems of music, each with a vocal line and a lute line. The lyrics are in Latin and are written below the vocal line. Above the staves, there is handwritten musical notation in brown ink, which appears to be a tablature or a specific notation system used by the composer or scribe. The score begins with a red 'J' and the Roman numeral 'VIII'. The text ends with 'V̄. De-'.



us a Lí- ba- no vé- ni- et, et Sanctus de mon- te umbró-



so et con- dén- so. * Gau- de.