

# R̄. Sicut mater

H 22					
Mode	8002	Rom1	9r		
CAO	7660	Rom2	6v		
C	G	B	E	M	V
H	R	D	F	S	

Is 66,13

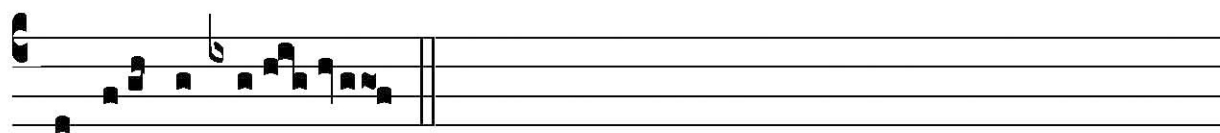
R̄. VIII

**S**icut ma- ter conso-lá-tur fi-li- os su- os, i-  
 ta conso-lábor vos, di- cit Dómi- nus ; et de Je-  
 rúsa- lem ci- vi- tá- te quam e- lé- gi, véni- et vo-  
 bis auxí- li- um : \* Et vi-dé- bi- tis et gaudé-  
 bit cor ve- strum. ¶ De- us a Lí- bano vé- ni- et,

The image shows a musical score for the responsory 'Sicut mater'. It consists of four systems of music, each with a vocal line and a lute line. The lyrics are in Latin and are written below the vocal line. A large red initial 'S' is placed at the beginning of the first system. The score includes various musical notations such as clefs, notes, rests, and accidentals. There are also some handwritten annotations in brown ink above the staffs, possibly indicating performance instructions or corrections. The text is set in a Gothic-style font.



et sanctus de monte umbró-so et condén- so. \* Et



vi-dé- bi- tis.