

R̄. Missus est

| | | | | | |
|------|------|------|----|----|----|
| H 16 | | | | | |
| Mode | 7002 | Rom1 | 4r | | |
| CAO | 7120 | Rom2 | 3r | | |
| | G | B | E | M | V |
| H | R | D | F | S* | L* |

Lc 1,26-27.30.32 Ṽ. Id, 28

R̄. VII

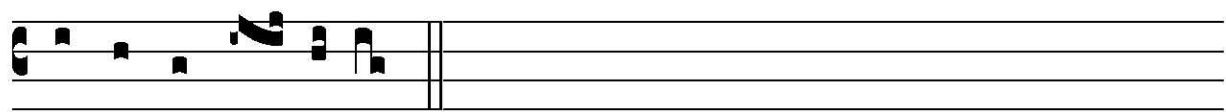
M Issus est Gábri-el An-ge-lus ad Ma-rí-am Vír-
 gi-nem desponsá-tam Jo-seph, núnti-ans e-i ver-
 bum; et expa-véscit Vir-go de lú-mi-ne. Ne
 tí-me-as, Ma-rí-a, inve-ní-sti grá-ti-am apud Dó-
 mi-num, * Ecce concí-pi-es et pá-ri-es, et vo-



cá- bi- tur Altís- si- mi Fí- li- us. ✕ A-



ve, Ma-rí- a, grá- ti- a ple- na, Dó- mi- nus te- cum.



* Ecce concí- pi- es.